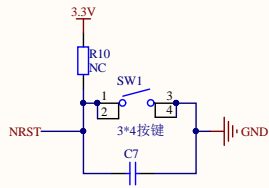
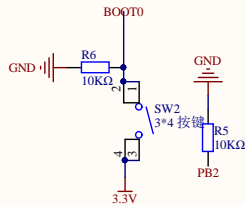


用户按键
User KEY

V1.3 增加用户按键 KEY

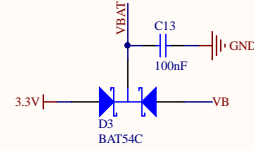


复位电路
Reset circuit

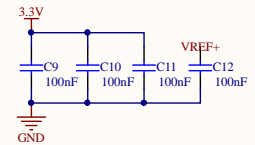
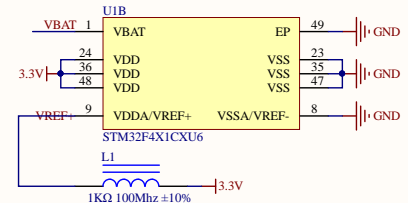


BOOT设置
BOOT Settings

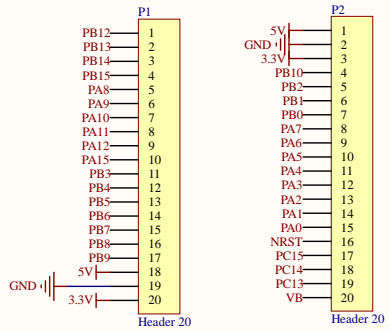
V1.2 修改BOOT跳线为BOOT0按键，BOOT1 10K下拉



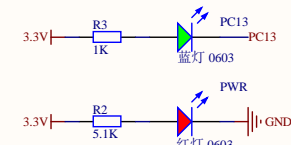
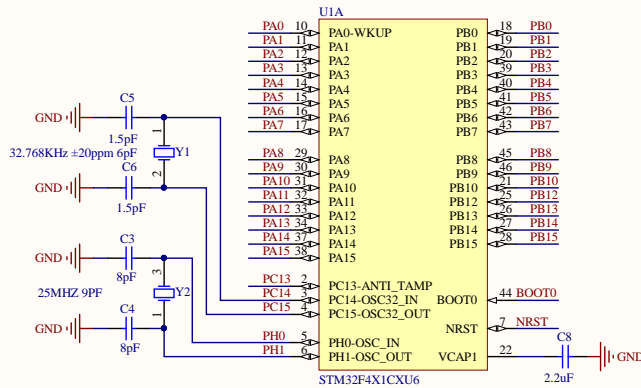
RTC电源
RTC circuit



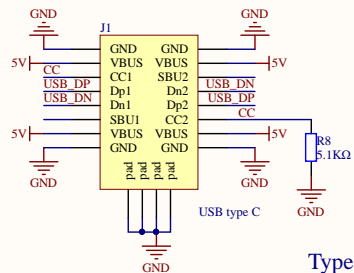
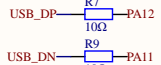
STM32电源部分
STM32 Power supply



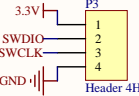
V1.1 将18由GND改为5V，支持直接驱动一路舵机



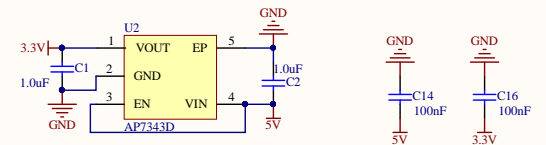
指示灯
Indicator light



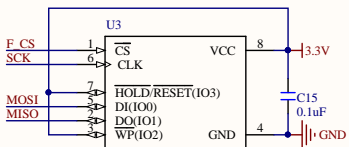
Type-C 接口
Type-C interface



SW 调试下载接口
SW debug download interface



5V -> 3.3V 电源转换
5V -> 3.3V Power conversion



FLASH 自行购买焊接

V2.0 MISO脚由PA6改为PB4,方便STM32F411用户同时连接TF卡和FLASH
V2.1 MISO脚由PB4改回PA6

WeAct Studio

Title MiniF4 Bottom有V2.1字样 V2.1

Size Number Revision
A3 V2.1

Date: 2020/1/13 Sheet of
File: E:\AD19\MiniF4x1Cx.SchDoc Drawn By: zhuyix