

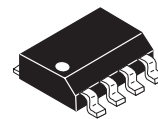
The RF Line  
**NPN Silicon**  
**RF Low Power Transistor**

Designed for amplifier, frequency multiplier, or oscillator applications in industrial equipment constructed with surface mount components. Suitable for use as output driver or pre-driver stages in VHF and UHF equipment.

- Low Cost SORF Plastic Surface Mount Package
- Guaranteed RF Specification —  $|S_{21}|^2$
- S-Parameter Characterization
- Low Voltage Version of MRF3866
- Tape and Reel Packaging Available.  
R2 suffix = 2,500 units per reel

**MRF4427R2**

1.0 W, 175 MHz  
HIGH-FREQUENCY  
TRANSISTOR  
NPN SILICON



CASE 751-06, STYLE 1  
SORF  
(SO-8)

**MAXIMUM RATINGS**

Rating	Symbol	Value	Unit
Collector-Emitter Voltage	$V_{CEO}$	20	Vdc
Collector-Base Voltage	$V_{CBO}$	40	Vdc
Emitter-Base Voltage	$V_{EBO}$	2.0	Vdc
Collector Current — Continuous	$I_C$	400	mAdc
Total Device Dissipation @ $T_C = 75^\circ\text{C}$ Derate above $75^\circ\text{C}$	$P_D$	1.67 22.2	Watts mW/ $^\circ\text{C}$
Operating Junction and Storage Temperature Range	$T_J, T_{stg}$	-65 to +150	$^\circ\text{C}$

**THERMAL CHARACTERISTICS**

Characteristic	Symbol	Max	Unit
Thermal Resistance, Junction to Case	$R_{\theta JC}$	45	$^\circ\text{C/W}$

**DEVICE MARKING**

MRF4427 = 4427

**ELECTRICAL CHARACTERISTICS** ( $T_A = 25^\circ\text{C}$  unless otherwise noted)

Characteristic	Symbol	Min	Typ	Max	Unit
----------------	--------	-----	-----	-----	------

**OFF CHARACTERISTICS**

Collector-Emitter Sustaining Voltage ( $I_C = 5.0 \text{ mAdc}, I_B = 0$ )	$V_{(BR)CEO}$	20	—	—	Vdc
Collector-Emitter Breakdown Voltage ( $I_C = 5.0 \text{ mAdc}, R_{BE} = 10 \text{ ohms}$ )	$V_{(BR)CER}$	40	—	—	Vdc
Emitter-Base Breakdown Voltage ( $I_E = 100 \mu\text{Adc}$ )	$V_{(BR)EBO}$	2.0	—	—	Vdc
Collector Cutoff Current ( $V_{CE} = 12 \text{ Vdc}, I_B = 0$ )	$I_{CEO}$	—	—	20	$\mu\text{Adc}$

NOTE:

1. Case temperature measured on collector lead immediately adjacent to body of package.

(continued)



LIFETIME BUY

LAST SHIP 14/04/00  
LAST ORDER 14/10/99

**ELECTRICAL CHARACTERISTICS — continued** ( $T_A = 25^\circ\text{C}$  unless otherwise noted)

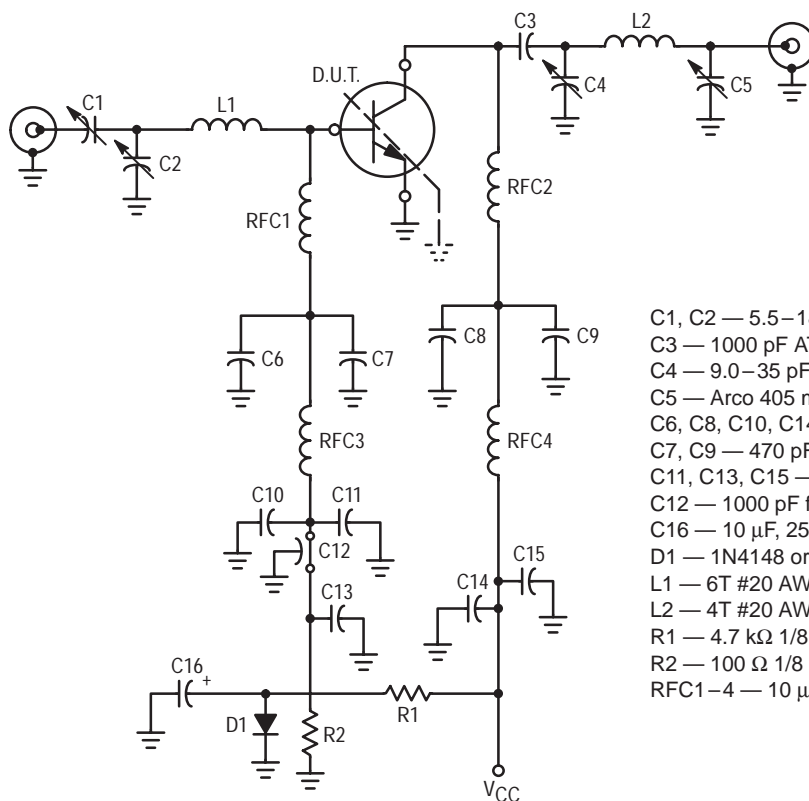
Characteristic	Symbol	Min	Typ	Max	Unit
<b>ON CHARACTERISTICS</b>					
DC Current Gain ( $I_C = 100 \text{ mA}$ , $V_{CE} = 5.0 \text{ Vdc}$ ) ( $I_C = 360 \text{ mA}$ , $V_{CE} = 5.0 \text{ Vdc}$ )	$h_{FE}$	10 5.0	50 —	200 —	—
Collector–Emitter Saturation Voltage ( $I_C = 100 \text{ mA}$ , $I_B = 20 \text{ mA}$ )	$V_{CE(sat)}$	—	60	—	mVdc

**DYNAMIC CHARACTERISTICS**

Current–Gain — Bandwidth Product ( $I_C = 50 \text{ mA}$ , $V_{CE} = 12 \text{ Vdc}$ , $f = 200 \text{ MHz}$ )	$f_T$	—	1600	—	MHz
Output Capacitance ( $V_{CB} = 12 \text{ Vdc}$ , $I_E = 0$ , $f = 1.0 \text{ MHz}$ )	$C_{ob}$	—	—	3.0	pF

**FUNCTIONAL TESTS**

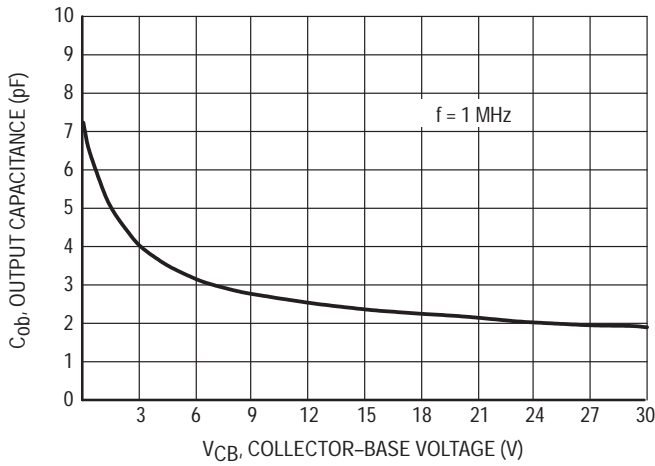
Common–Emitter Amplifier Power Gain ( $P_{in} = 15 \text{ mW}$ , $V_{CC} = 12 \text{ Vdc}$ , $f = 175 \text{ MHz}$ )	$G_{pe}$	—	18	—	dB
Collector Efficiency (Figure 1) ( $P_{out} = 1.0 \text{ W}$ , $V_{CC} = 12 \text{ Vdc}$ , $f = 175 \text{ MHz}$ )	$\eta$	—	60	—	%
Insertion Gain ( $V_{CE} = 12 \text{ Vdc}$ , $I_C = 50 \text{ mA}$ , $f = 200 \text{ MHz}$ )	$ S_{21} ^2$	14	16.4	—	dB



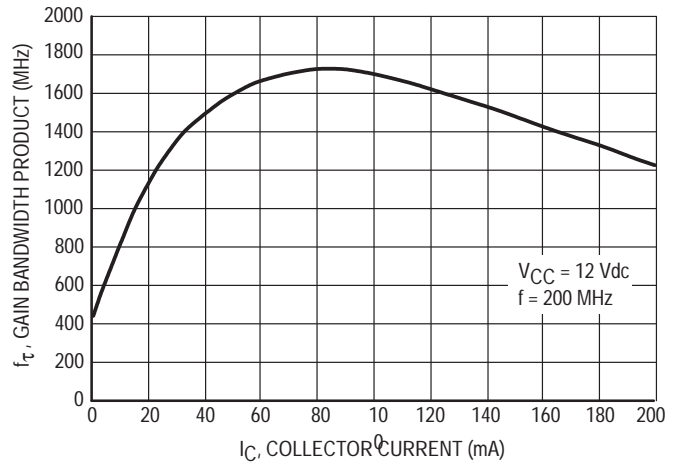
- C1, C2 — 5.5–18 pF Erie ceramic trimmer
- C3 — 1000 pF ATC 100 mil chip cap.
- C4 — 9.0–35 pF Erie ceramic trimmer
- C5 — Arco 405 mica trimmer
- C6, C8, C10, C14 — 0.1  $\mu\text{F}$  Erie blue cap.
- C7, C9 — 470 pF ATC 100 mil chip cap.
- C11, C13, C15 — 1.0  $\mu\text{F}$  Erie blue cap, non-polar
- C12 — 1000 pF feedthru
- C16 — 10  $\mu\text{F}$ , 25 V tantalum
- D1 — 1N4148 or 1N914
- L1 — 6T #20 AWG on #2 drill bit
- L2 — 4T #20 AWG on #4 drill bit
- R1 — 4.7 k $\Omega$  1/8 watt carbon
- R2 — 100  $\Omega$  1/8 watt carbon
- RFC1–4 — 10  $\mu\text{H}$  molded choke

**Figure 1. 175 MHz RF Amplifier Circuit for Functional Tests**

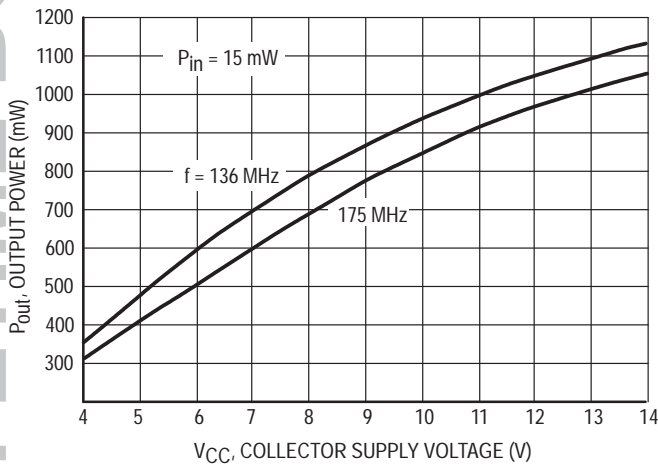
## TYPICAL CHARACTERISTICS



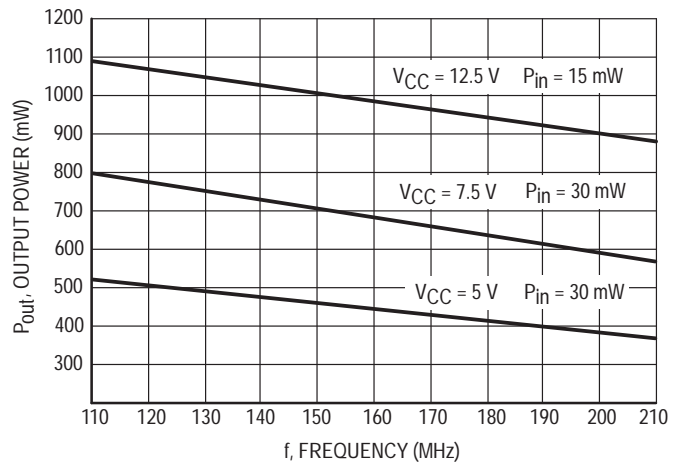
**Figure 2. Collector-Base Capacitance versus Voltage**



**Figure 3. Gain Bandwidth Product versus Collector Current**



**Figure 4. Output Power versus Voltage**



**Figure 5. Output Power versus Frequency**

LIFETIME BUY

LAST SHIP 14/04/00  
LAST ORDER 14/10/99

V <sub>CE</sub> (Volts)	I <sub>C</sub> (mA)	f (MHz)	S <sub>11</sub>		S <sub>21</sub>		S <sub>12</sub>		S <sub>22</sub>		
			S <sub>11</sub>	∠	S <sub>21</sub>	∠	S <sub>12</sub>	∠	S <sub>22</sub>	∠	
5.0	5.0	50	0.82	-104	10.3	125	0.05	38	0.68	-34	
		100	0.83	-141	6.1	103	0.06	26	0.51	-40	
		200	0.81	-165	3.2	85	0.07	21	0.44	-46	
		500	0.80	169	1.3	57	0.07	32	0.49	-73	
		750	0.79	156	0.8	42	0.08	49	0.58	-94	
		1000	0.76	144	0.6	30	0.11	61	0.65	-114	
	25	50	0.77	-151	19	107	0.02	36	0.35	-75	
		100	0.79	-168	9.9	94	0.03	37	0.21	-87	
		200	0.79	-180	5.0	82	0.04	49	0.16	-97	
		500	0.78	163	2.0	61	0.07	62	0.22	-106	
		750	0.77	152	1.3	48	0.10	66	0.31	-115	
		1000	0.74	141	0.9	36	0.13	66	0.37	-127	
	50	50	0.77	-163	21.1	103	0.02	37	0.29	-98	
		100	0.79	-174	10.7	92	0.02	50	0.19	-119	
		200	0.79	177	5.4	82	0.03	62	0.16	-134	
		500	0.78	162	2.2	62	0.07	67	0.20	-131	
		750	0.77	151	1.4	50	0.10	69	0.26	-130	
		1000	0.74	140	1.1	38	0.13	67	0.32	-139	
12		5.0	50	0.83	-97	11	129	0.04	46	0.75	-26
			100	0.82	-135	6.8	107	0.05	29	0.61	-29
			200	0.81	-162	3.6	88	0.05	24	0.54	-34
			500	0.79	171	1.4	60	0.06	37	0.47	-57
			750	0.78	157	0.9	44	0.07	55	0.64	-76
			1000	0.75	145	0.7	32	0.09	68	0.70	-95
	25	50	0.73	-143	22.1	111	0.02	38	0.43	-52	
		100	0.76	-164	11.7	96	0.02	39	0.29	-52	
		200	0.77	-177	6.0	84	0.03	48	0.22	-53	
		500	0.76	165	2.4	63	0.06	64	0.27	-69	
		750	0.75	154	1.6	49	0.08	67	0.35	-84	
		1000	0.72	143	1.1	38	0.11	69	0.42	-98	
	50	50	0.73	-156	25.5	106	0.02	41	0.32	-67	
		100	0.75	-171	13.1	94	0.02	49	0.20	-69	
		200	0.76	59	6.6	83	0.03	60	0.15	-71	
		500	0.75	164	2.6	64	0.06	69	0.20	-81	
		750	0.74	153	1.7	51	0.09	70	0.27	-92	
		1000	0.71	142	1.2	38	0.12	70	0.34	-104	

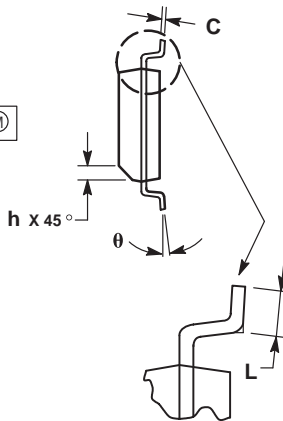
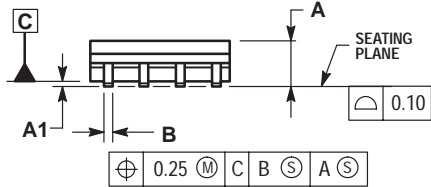
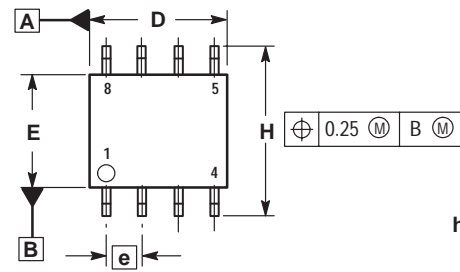
Table 1. Common Emitter S-Parameters

Freq. (MHz)	P <sub>in</sub> (mW)	P <sub>out</sub> (mW)	V <sub>CC</sub> (Volts)	Z <sub>in</sub> (Ohms)	Z <sub>OL</sub> * (Ohms)
136	15	—	12.5	6.2 - j11.6	—
175	15	—	12.5	4.6 - j10.4	—
136	—	1000	12.5	—	47.7 + j41.7
175	—	1000	12.5	—	47.4 - j34.4
136	30	—	7.5	5.65 - j12.6	—
175	30	—	7.5	6.25 - j12.2	—
136	—	650	7.5	—	27.6 - j32.4
175	—	650	7.5	—	27.9 - j27.6
136	30	—	5.0	6.1 - j13.3	—
175	30	—	5.0	5.9 - j12.22	—
136	—	450	5.0	—	24.8 - j22.8
175	—	450	5.0	—	28.3 - j29.3

Z<sub>OL</sub>\* = Conjugate of the optimum load impedance into which the device output operates at a given output power, voltage and frequency.

Table 2. Series Input/Output Impedances

PACKAGE DIMENSIONS



NOTES:

1. DIMENSIONING AND TOLERANCING PER ASME Y14.5M, 1994.
2. DIMENSIONS ARE IN MILLIMETER.
3. DIMENSION D AND E DO NOT INCLUDE MOLD PROTRUSION.
4. MAXIMUM MOLD PROTRUSION 0.15 PER SIDE.
5. DIMENSION B DOES NOT INCLUDE DAMBAR PROTRUSION. ALLOWABLE DAMBAR PROTRUSION SHALL BE 0.127 TOTAL IN EXCESS OF THE B DIMENSION AT MAXIMUM MATERIAL CONDITION.

DIM	MILLIMETERS	
	MIN	MAX
A	1.35	1.75
A1	0.10	0.25
B	0.35	0.49
C	0.19	0.25
D	4.80	5.00
E	3.80	4.00
e	1.27 BSC	
H	5.80	6.20
h	0.25	0.50
L	0.40	1.25
θ	0°	7°

- STYLE 1:  
 PIN 1. EMITTER  
 2. COLLECTOR  
 3. COLLECTOR  
 4. EMITTER  
 5. EMITTER  
 6. BASE  
 7. BASE  
 8. EMITTER

CASE 751-06  
 ISSUE T


LIFETIME BUY

LAST SHIP 14/04/00

LAST ORDER 14/10/99

LIFETIME BUY

LAST SHIP 14/04/00  
LAST ORDER 14/10/99

Motorola reserves the right to make changes without further notice to any products herein. Motorola makes no warranty, representation or guarantee regarding the suitability of its products for any particular purpose, nor does Motorola assume any liability arising out of the application or use of any product or circuit, and specifically disclaims any and all liability, including without limitation consequential or incidental damages. "Typical" parameters which may be provided in Motorola data sheets and/or specifications can and do vary in different applications and actual performance may vary over time. All operating parameters, including "Typicals" must be validated for each customer application by customer's technical experts. Motorola does not convey any license under its patent rights nor the rights of others. Motorola products are not designed, intended, or authorized for use as components in systems intended for surgical implant into the body, or other applications intended to support or sustain life, or for any other application in which the failure of the Motorola product could create a situation where personal injury or death may occur. Should Buyer purchase or use Motorola products for any such unintended or unauthorized application, Buyer shall indemnify and hold Motorola and its officers, employees, subsidiaries, affiliates, and distributors harmless against all claims, costs, damages, and expenses, and reasonable attorney fees arising out of, directly or indirectly, any claim of personal injury or death associated with such unintended or unauthorized use, even if such claim alleges that Motorola was negligent regarding the design or manufacture of the part. Motorola and  are registered trademarks of Motorola, Inc. Motorola, Inc. is an Equal Opportunity/Affirmative Action Employer.

Mfax is a trademark of Motorola, Inc.

**How to reach us:**

**USA/EUROPE/Locations Not Listed:** Motorola Literature Distribution;  
P.O. Box 5405, Denver, Colorado 80217. 1-303-675-2140 or 1-800-441-2447

**JAPAN:** Nippon Motorola Ltd.: SPD, Strategic Planning Office, 141,  
4-32-1 Nishi-Gotanda, Shagawa-ku, Tokyo, Japan. 03-5487-8488

**Customer Focus Center: 1-800-521-6274**

**Mfax™:** RMFAX0@email.sps.mot.com – TOUCHTONE 1-602-244-6609  
Motorola Fax Back System – US & Canada ONLY 1-800-774-1848  
– http://sps.motorola.com/mfax/

**ASIA/PACIFIC:** Motorola Semiconductors H.K. Ltd.; 8B Tai Ping Industrial Park,  
51 Ting Kok Road, Tai Po, N.T., Hong Kong. 852-26629298

**HOME PAGE:** <http://motorola.com/sps/>



**MOTOROLA**



MRF4427/D